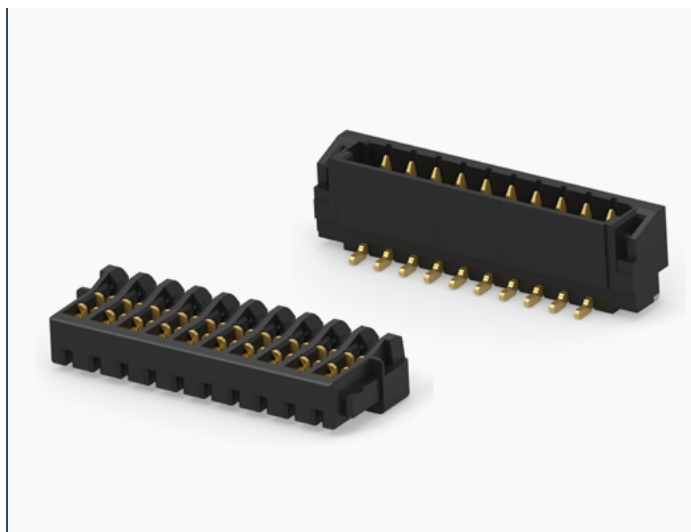


INTRODUCING 0.8MM LOW-PROFILE IDC CONNECTOR SYSTEM

- Space-saving, low-profile design
- Convenient IDC cable termination
- Helps save PCB real estate



Meeting the industry need for small centerline wire-to-board connectors with a convenient insulation displacement contact (IDC) termination, 0.8mm low-profile IDC connectors can be used in space constrained applications where signal or low power needs to be routed through a device. TE offers an extensive wire-to-board product offering that provides customers with design flexibility and versatility. The 0.8mm low-profile IDC connector system is designed to enable product compatibility with industry standard products though square-peg technology to provide TE solutions to customers that extend past the design-in cycle.

APPLICATIONS

- **Internet of Things (IoT)**
 - Security systems
 - Small appliances
 - Smart meters
 - Vending machines
- **Data communications**
 - Servers
 - Switches
 - Modems
- **Consumer devices**
- **Automotive**
 - Control units
 - Infotainment systems
- **Medical**
 - Patient monitors
- **Industrial automation**

PRODUCT FEATURES

- Current rating: 1A
- High temperature plastic, UL94V-0
- Gold plating options available
- Compact 0.8mm centerline
- Convenient IDC cable termination

LEARN MORE

- [Landing Page](#)
- [Parts List](#)
- [Product Flyer](#)