

NOTES:

1. ALL PARTS TO BE BULK PACKED.
2. 17295UV-B-WA CONTAINS ONE IP SEAL CAP ASSEMBLY AND ONE FLAT WASHER.
3. ALL DIMENSIONS ARE REFERENCE ONLY

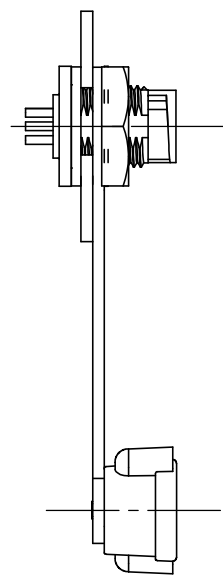
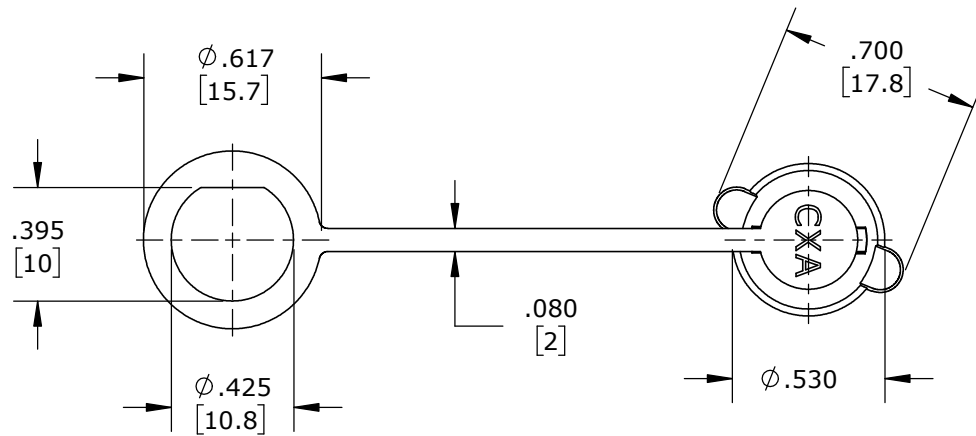
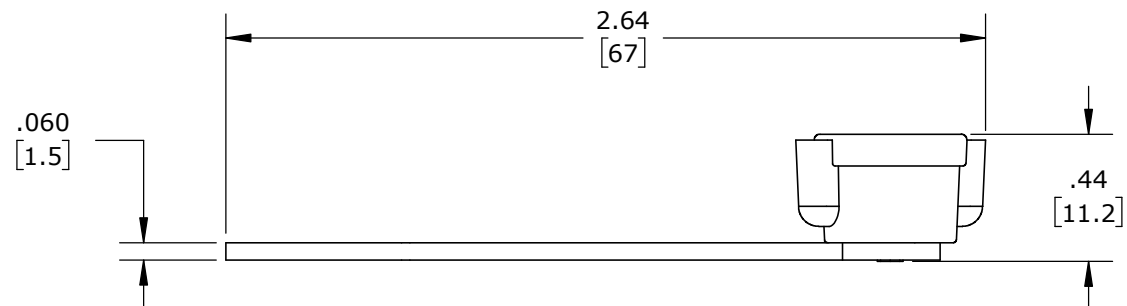
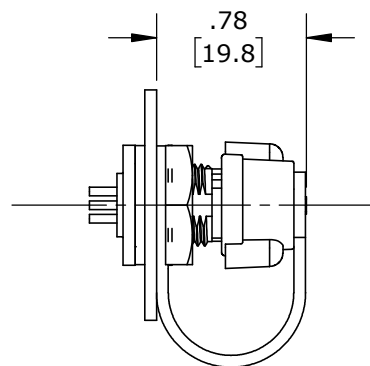
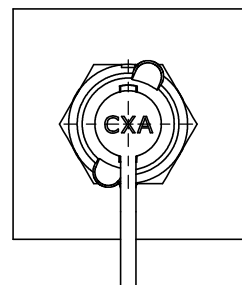


FIG B: IP CAP INSTALLED
ON THE CONNECTOR



SIDE VIEW



FRONT VIEW

FIG C: IP CAP APPLIED ON THE CONNECTOR

TYPICAL MICRO-CON-X SERIES
PANEL-MOUNT CONNECTOR
(PURCHASED SEPARATELY)

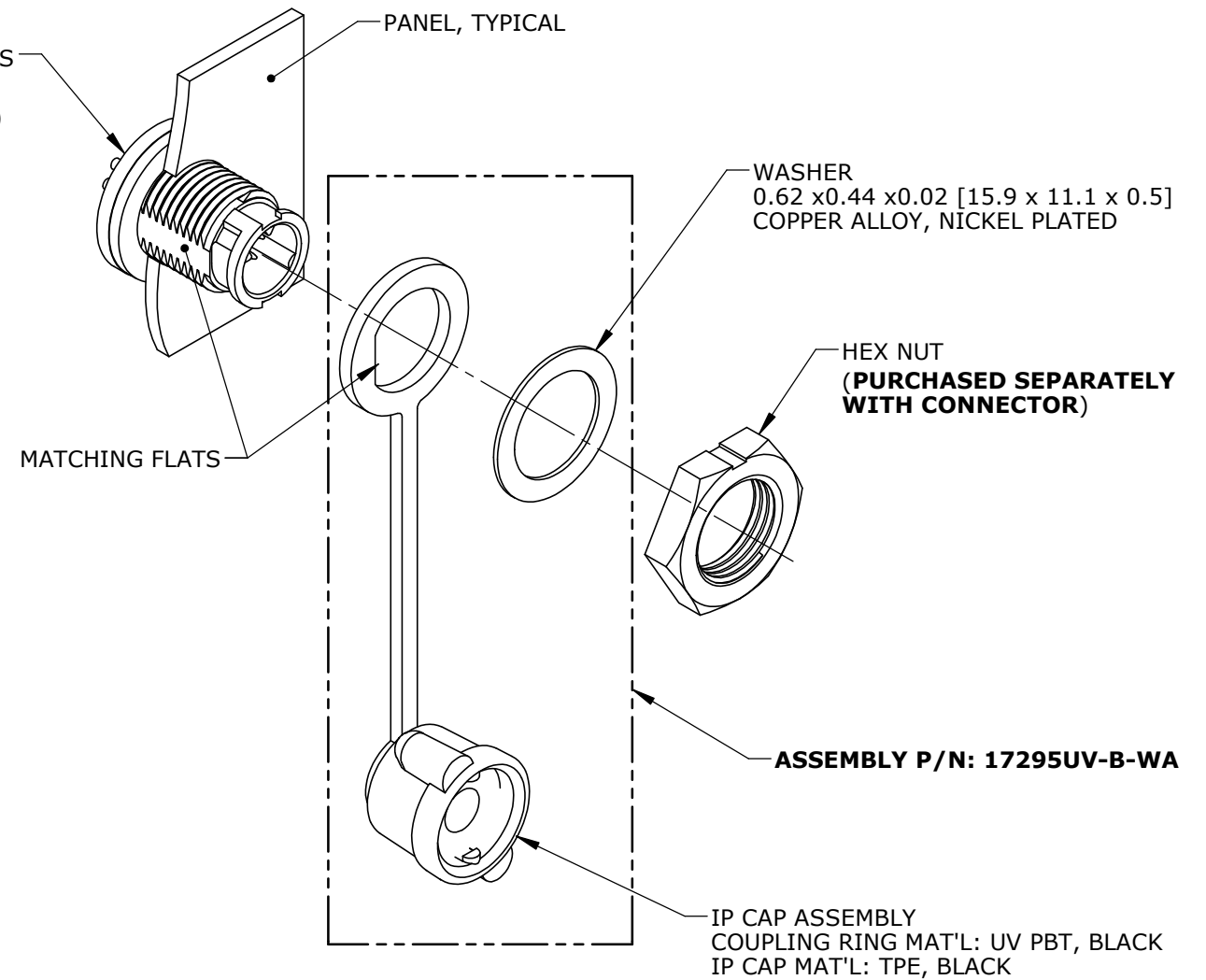


FIG A

INSTALLATION INSTRUCTIONS:

1. INSTALL IP CAP ON THE CONNECTOR AS SHOWN IN FIG A AND FIG B.
2. HEX NUT RECOMMENDED TORQUE: 5 lb-in [0.56 N-m]
3. TO APPLY IP CAP (FIG C), ALIGN COUPLING RING TO FRONT OF CONNECTOR, PRESS AND TWIST ABOUT 20° CLOCKWISE TO SECURED IT IN PLACE.

CUSTOMER APPROVAL

THIS DOCUMENT CONTAINS CONFIDENTIAL INFORMATION PROPRIETARY TO CONXALL CORPORATION. ANY REPRODUCTION, DISCLOSURE, OR USE OF THIS DOCUMENT /INFORMATION IS EXPRESSLY PROHIBITED UNLESS AUTHORIZED IN WRITING BY CONXALL CORPORATION.

APPROVED BY: _____
DATE: _____

DIMENSIONS IN BRACKETS [] ARE METRIC

RoHS COMPLIANT

A	AN	10-10-24	RELEASED	
	PNK	11-01-23	DRAWING CREATED PER PDR 23007	
REV.	INIT.	DATE	DESCRIPTION	
ALL INFORMATION ILLUSTRATED IS THE PROPERTY OF "CONXALL CORPORATION." UNAUTHORIZED DUPLICATION OR DISTRIBUTION OF THIS DOCUMENT IS PROHIBITED.			ORIG. DRAWN BY: PNK	DATE: 11-01-23
ALL UNITS ARE IN FEET, INCHES, FRACTION OF INCHES AND DECIMALS.			CHECKED BY:	
			APPROVED BY:	
			SCALE NTS	SIZE B
			SHEET 1 OF 1	
			FILE: 17295UV-B-WA	DIRECTORY: SLW
			PART NUMBER: 17295UV-B-WA	REV A

conxall
601 E. WILDWOOD VILLA PARK, IL 60181

TITLE: IP CAP, UV
PANEL-MOUNT
MICRO-CON-X
CUSTOMER: STANDARD PRODUCT