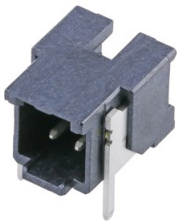


Micro-One Through-Hole Connectors >

As the need for contact reliability in compact, harsh-environment applications grows, Molex's Micro-One Through-Hole Connectors provide a robust 2.00mm-pitch solution for components to withstand severe conditions, offering integrated independent secondary lock (ISL), potting capabilities and Glow Wire capable options.

FEATURES AND ADVANTAGES

Voltage (max.)	250V
Current (max.)	4.0A
Operating temperatures	-40 to 105°C
Glow Wire Capable	Yes



Offers reduced weight and space savings
Low-profile design



Helps ensure reliability
UL certification

Helps prevent ingress of dust and moisture
Potting on vertical-orientation connectors



Provide design flexibility
Vertical and right-angle headers with 2 to 8 circuits

Meets the required EU regulations for the home appliance market
Glow Wire capable

MARKETS AND APPLICATIONS

Consumer

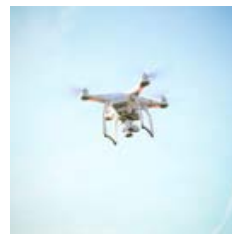
- Air conditioners
- Drones
- Refrigerators
- Vacuum cleaners
- Vending machines
- Washing machines
- Water heaters/boilers

Industrial

- Factory automation equipment
- Power tools
- Robotics
- Test equipment



Robotics



Drones



Vending Machines

Micro-One Through-Hole Connectors >

SPECIFICATIONS

Reference Information

Packaging: Tray (header assembly)
UL File No.: TBD
CSA File No.: TBD
Mates with: 205979, 212724
Terminal Used: 56134
Designed In: (Millimeters)
RoHS: Yes
Glow Wire capable: Yes

Electrical

Voltage (max.): 250V
Current (max.): 4.0A (2 circuit, 22 AWG)
Contact Resistance (max): 20 milliohms
Dielectric Withstanding Voltage: 1000V AC
Insulation Resistance: 1000 Megohms

Mechanical

Durability (max.): 30 cycles

Physical

Housing: Black
Contact: Copper Alloy
Terminal Pin—Tin-Bismuth over Nickel
Nail Plating: Tin
PCB Thickness: 1.60mm
Operating Temperature: -40 to +105°C