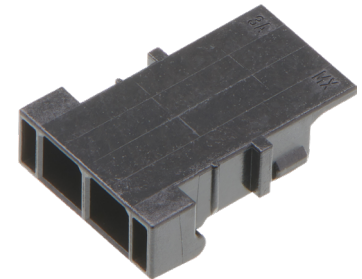
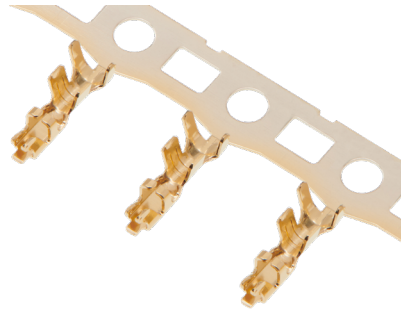
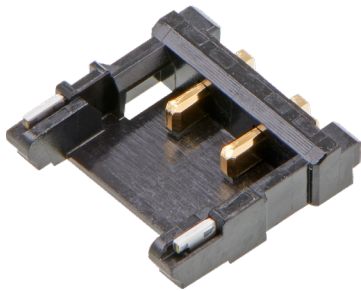


# Pico-EZmate 1.80mm High-Current (HC) Wire-to-Board Connectors

Pico-EZmate 1.80mm HC Wire-to-Board Connectors offer the highest electric current of 5.0A among the Pico-EZmate family and have a compact design for excellent performance in tight-space applications.

## FEATURES AND ADVANTAGES



### Low profile and compact size

Is ideal for small consumer devices that have narrow space to mount the connectors

### Polyamide material

Is low-halogen compliant

### High current of 5.0A

Supports high electric current application requirements

### Designed for battery connections

Supports battery connection for mobile devices

### Reinforced locking force

Improves locking strength with a 10N min. force dual locking system

### Ergonomic mating and un-mating in the diagonal direction

Allows for an easier mating and un-mating process

## MARKETS AND APPLICATIONS

### Consumer

Entertainment devices  
Game machines  
Smart devices  
TV set-top boxes  
Workstation PCs

### Data Center

Data termination equipment

### Home Appliances

White goods

### Medical

Instruments

### Mobile Device

Laptops  
Tablet PCs  
POS systems  
Card readers

### In-Vehicle Infotainment

Navigation systems  
Lidar systems  
Dashcams  
Bluetooth charge boxes



Smart Devices



White Goods



POS Systems

# Pico-EZmate 1.80mm High-Current (HC) Wire-to-Board Connectors >

## SPECIFICATIONS

### Reference Information

#### Packaging:

Plug assembly—embossed tape

REC housing—poly bag

Crimp terminal—reel

RoHS: Compliant

Low Halogen: Yes

### Mechanical

Insertion Force (max.): 3.5kgf

Withdrawal Force (min.): 0.15kgf

Durability (max.): 30 cycles

### Electrical

Voltage (max.): 250V

Current (max.): 5.0A

Contact Resistance: 20 milliohms

Dielectric Withstanding Voltage: No damage

Insulation Resistance: 1,000 Megohms

### Physical

Housing: Polyamide—black

Terminal Plating: Copper and Gold

Operating Temperature: -40 to 105°C

## ORDERING INFORMATION

Series	Component	Wire Gauge	Circuits
<a href="#">208294</a>	Pico-Ezmate 1.80mm HC Wire-to-Board Plug Assemblies	-	2, 3, 4 and 5
<a href="#">208298</a>	Pico-Ezmate 1.80mm HC Wire-to-Board Receptable Housings		
<a href="#">208299</a>	Pico-Ezmate 1.80mm HC Wire-to-Board Crimp Terminals	22 and 24 AWG	-

[www.molex.com/link/pico\\_ezmate.html](http://www.molex.com/link/pico_ezmate.html)