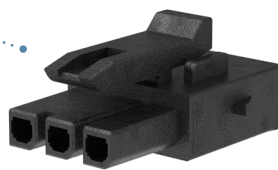
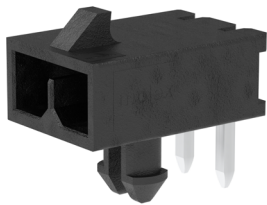


Micro-Fit+ Connector >

The Micro-Fit+ Connector System offers a 3.00mm pitch, a high current rating of 13.0A and superior design options for flexibility and efficient assembly.

FEATURES AND ADVANTAGES

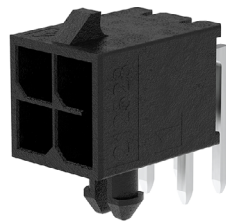
Fully isolated contacts on each side of the interface
Help prevent potential arcing



Unique keying design
Prevents mis-mating; different than standard Micro-Fit 3.0

Reduced mating force by 40%
Allows for ease of work, reducing operator fatigue during assembly with its unique design compared to standard Micro-Fit 3.0

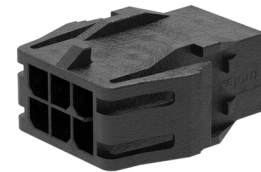
Fully polarized housings
Help ensure proper mating orientation; not compatible with standard Micro-Fit 3.0 Connectors



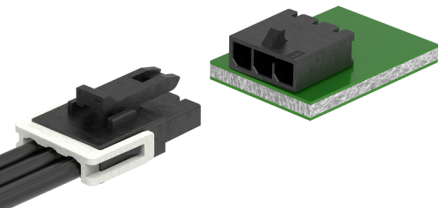
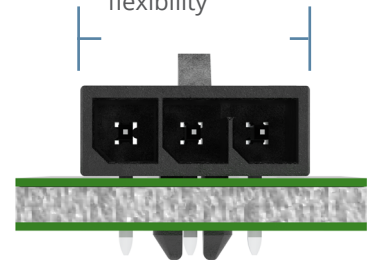
V-0/Glow Wire combination resin
Reduces the cost of materials and labor and allows customers to meet the European standard for electrical requirements



Reflow options available
Reduces labor costs, saves time and resources. Offers a ~260°C reflow-capable temperature



Smaller PCB footprint
Provides design flexibility



Enhanced Terminal Position Assurance (TPA) design
Provides stability and security for the terminals inside the receptacle; offers easy assembly for operators



Surface-Mount Technology (SMT) and Through-Hole Technology (THT) headers
Offer flexibility in PCB design, with clip and nail SMT options available for improved strength and reliability

Micro-Fit+ Connector >

APPLICATIONS

Consumer

Copiers
Freezers
Pinball and slot machines
Printers
Refrigerators
Vending machines
Video poker and pachinko
Washing machines

Telecommunications/ Networking

Routers and switches
Servers
Storage

Medical

Diagnostic equipment
Patient monitors

Sustainable Energy

Solar power

Automotive

Telematics
Non-critical applications



Routers



Appliances



Medical

SPECIFICATIONS

Reference Information

Packaging: Bag, tray, reel
UL File No.: E29179
CSA File No.: LR19980
Mates With:
Series: [206832](#) Series: [206461](#)
Use With:
Series: [206460](#) Series: [206461](#)
Series: [206461](#) Series: [206462](#)
Terminal Used:
Series: [206460](#)
Designed In: Millimeters
RoHS: Yes
Halogen Free: Yes
Glow Wire Capable: Yes

Electrical

Voltage (max.): 600V AC (RMS) or DC
Current (max.): 13.0A
Contact Resistance: 10 milliohms maximum
Dielectric Withstanding Voltage: No breakdown;
current leakage < 5mA
Insulation Resistance: 1000 megohms minimum

Mechanical

Pitch: 3.00mm
Contact Insertion Force: 14.7N (3.3 lbf)
Maximum insertion force
Contact Retention to Housing: 24.5N (5.5 lbf)
Insertion Force to PCB: 13.7N (3.1 lbf)
Minimum retention force
Mating Force (min.):
7.0N per circuit Tin (Sn)
1.0N per circuit Gold (Au)
Unmating Force (min.):
1.4N per circuit Tin (Sn)
0.2N per circuit Gold (Au)

Physical

Housing: Glass filled liquid crystal polymer
Contact: High Copper Alloy
Plating: Gold (Au) or Tin (Sn) over Nickel overall
PCB Thickness: Standard 1.57mm
Operating Temperature: -40 to +105°C

www.molex.com/link/microfitplus.html