

Solder Cup Cable Connectors

The PowerAmp connector family is a 1- and 2-row high reliability connector solution with a pitch of 5.72 millimeters (0.225"). Available with 5 to 20 contacts and rated up to 23A per contact make it ideal for robust power connections. The connectors can also be customized to address unique design requirements.

- Current rating up to 23A per contact
- High vibration and shock resistant
- Withstands extreme temperatures of -65°C to +125°C
- Accepts wire sizes up to AWG 12 (4 mm²)
- UL94V-0 flammability rated insulator
- UL Approved, UL 1977 ECBT2.E466640



Part Number Builder

| iP | Rows | Body Style | Mounting Ears | Size | Termination | Hardware Style |
|--------|--------|------------------------------|---------------|----------------|---|--|
| Series | 1 2 | P Plug R Receptacle | 0 Without | 05 10 20 | PSC Pin: Vertical Solder Cup SSC Socket: Vertical Solder Cup | J Fixed Jacket JTB Turning Jacket QTT-1 Quarter Turn (Turning) QTF-1 Quarter-Turn (Fixed) |

Technical Information

Material Specifications

Insulator Material:
Glass-filled PPS (polyphenylene sulfide)
Insulator Color: White
Material (Contacts): Pins: copper alloy
Sockets: beryllium copper
Terminal Material: Copper alloy
Plating (Contacts):
Minimum 15 µin Au over 30 µin Ni
Hardware: Stainless steel
UL File: E466640

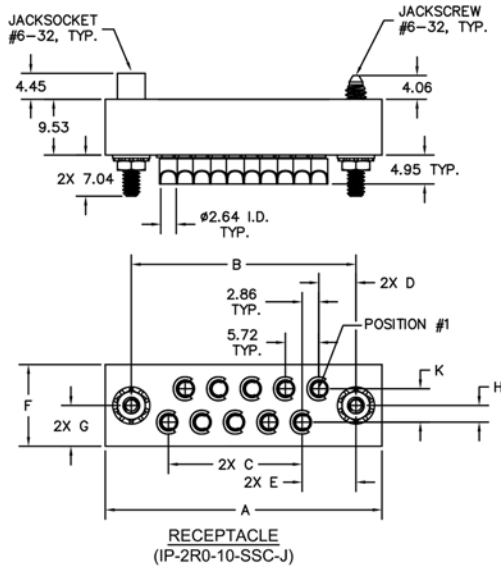
Electromechanical Performance

Rated Current: 23A per contact
Durability: ≥ 250 mating cycles
Test Voltage: 2,000 V AC for 1 minute
Insulation Resistance: 5 GΩ min.
Contact Resistance: 1 mΩ max.
Insertion Force (Max): 16 oz. (4.45N) per contact
Withdrawal Force (Min.):
0.5 oz. (0.14N) per contact

Environmental Specifications

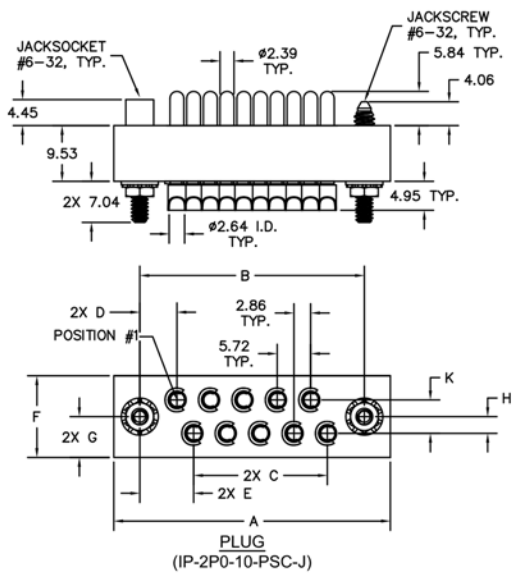
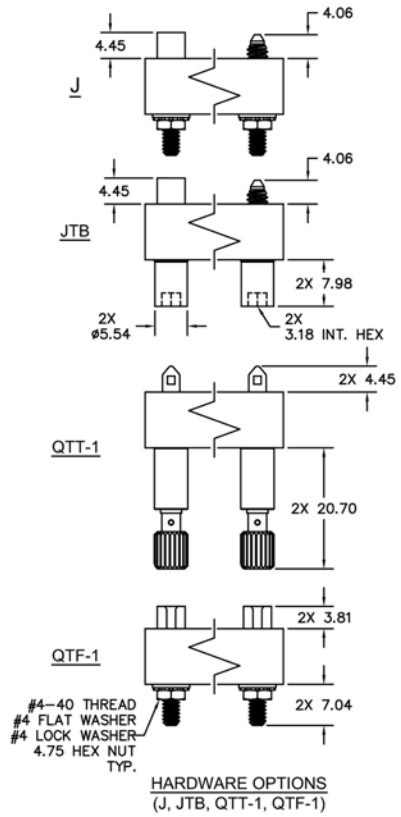
Operating Temperature: -65° to +125°C
Vibration: 10Hz to 2,000Hz, 1.52mm, 147.1m/s² (15G), duration 12h
RoHS: Compliant





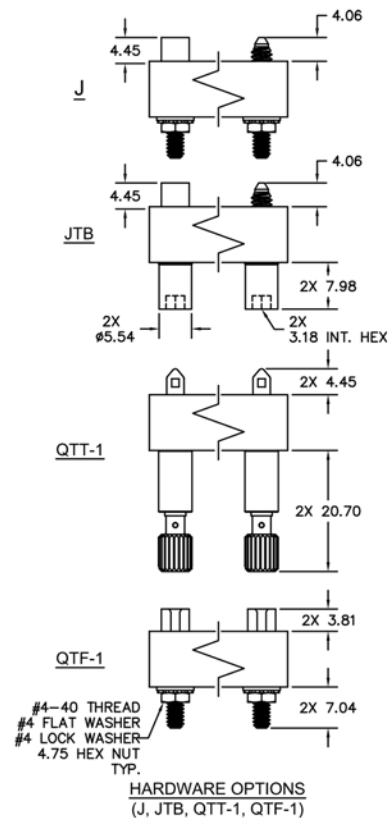
NOTES:
 SIZE 5 - SINGLE ROW
 SIZE 10 - 2-ROW STAGGERED GRID
 SIZE 20 - 2-ROW SQUARE GRID

| | | DIMENSIONS | | | | | | | | |
|------|-------|------------|-------|------|------|-------|------|------|------|--|
| SIZE | A | B | C | D | E | F | G | H | K | |
| 5 | 44.45 | 35.56 | 22.86 | 6.35 | N/A | 9.53 | 4.78 | N/A | N/A | |
| 10 | 47.29 | 38.40 | 22.86 | 6.35 | 9.22 | 13.97 | 6.99 | 2.86 | 5.72 | |
| 20 | 73.03 | 64.14 | 51.44 | 6.35 | 6.35 | 13.97 | 6.99 | 2.86 | 5.72 | |



NOTES:
 SIZE 5 - SINGLE ROW
 SIZE 10 - 2-ROW STAGGERED GRID
 SIZE 20 - 2-ROW SQUARE GRID

| | | DIMENSIONS | | | | | | | | |
|------|-------|------------|-------|------|------|-------|------|------|------|--|
| SIZE | A | B | C | D | E | F | G | H | K | |
| 5 | 44.45 | 35.56 | 22.86 | 6.35 | N/A | 9.53 | 4.78 | N/A | N/A | |
| 10 | 47.29 | 38.40 | 22.86 | 6.35 | 9.22 | 13.97 | 6.99 | 2.87 | 5.72 | |
| 20 | 73.03 | 64.14 | 51.44 | 6.35 | 6.35 | 13.97 | 6.99 | 2.87 | 5.72 | |



All dimensions
in millimeters.