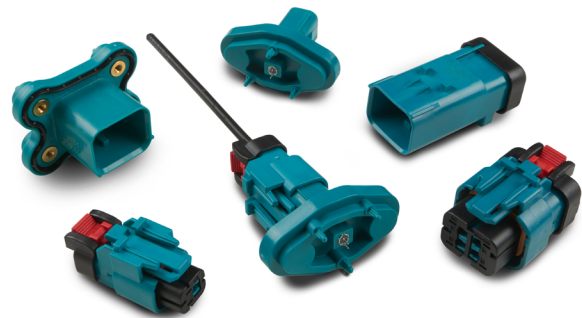


INTRODUCING AMPSEAL 16 CONNECTORS WITH COAXIAL TERMINALS

- **Easy-to-use, flexible design that utilizes automotive-standard coaxial cable and meets a wide range of communication protocols**
- **Reduce manufacturing and service costs with the use of a family seal design that eliminates costly heat shrink tubing and time-consuming application**



TE Connectivity's (TE) AMPSEAL 16 connectors with MATE-AX coaxial terminals deliver analog signal up to 6 GHz and digital data transmission to reliably connect antennas, cameras, sensors, and displays within heavy-duty commercial and industrial vehicles. Their easy-to-use, flexible design utilizes widely available automotive-standard coaxial cable and supports a wide range of communication protocols, including APIX 2/3, FPD Link III, GMSL 2/3, GNSS, GPS, 4G, and LTE.

The integration of a family seal into the housing design not only eases assembly but can also reduce manufacturing and service costs by eliminating expensive heat shrink tubing and time-consuming application. This product family meets all the vibration, mechanical shock and temperature requirements of rugged vehicles by utilizing the proven design of our AMPSEAL 16 housings along with the superior signal performance of our MATE-AX miniature coaxial terminals.

APPLICATIONS

- **In-Cabin Applications**MCU (Motor Control Unit)
 - ADAS controller
 - Camera
 - Displays
 - Telemetry units
 - V2X
 - Antennas
 - RADAR/LiDAR
 - Infotainment
- **Chassis Applications**
 - Camera
 - Telemetry units
 - Antennas
 - RADAR/LiDAR
 - GPS
 - Displays
 - Sealed Controller

KEY BENEFITS

- Utilizes standard 50 ohm RTK031, RG174 coaxial cable
- Simple latch and lock design for ease of connector mating
- Supports a wide range of communication protocols with 15 meter link and 2 in-line connections
- Integrated family seal helps eliminate the use of expensive heat shrink tubing and the associated time-consuming application
- Housing design features locking CPA latch and a primary latch reinforcement (PLR) to help confirm contact positioning and avoid misalignment
- Vibration and mechanical shock resistance
- IP67/IP69K (with backshell) dust and water protection

LEARN MORE

[Landing Page](#)

[Datasheet](#)

[Data Connectivity Catalog](#)

[Part List](#)