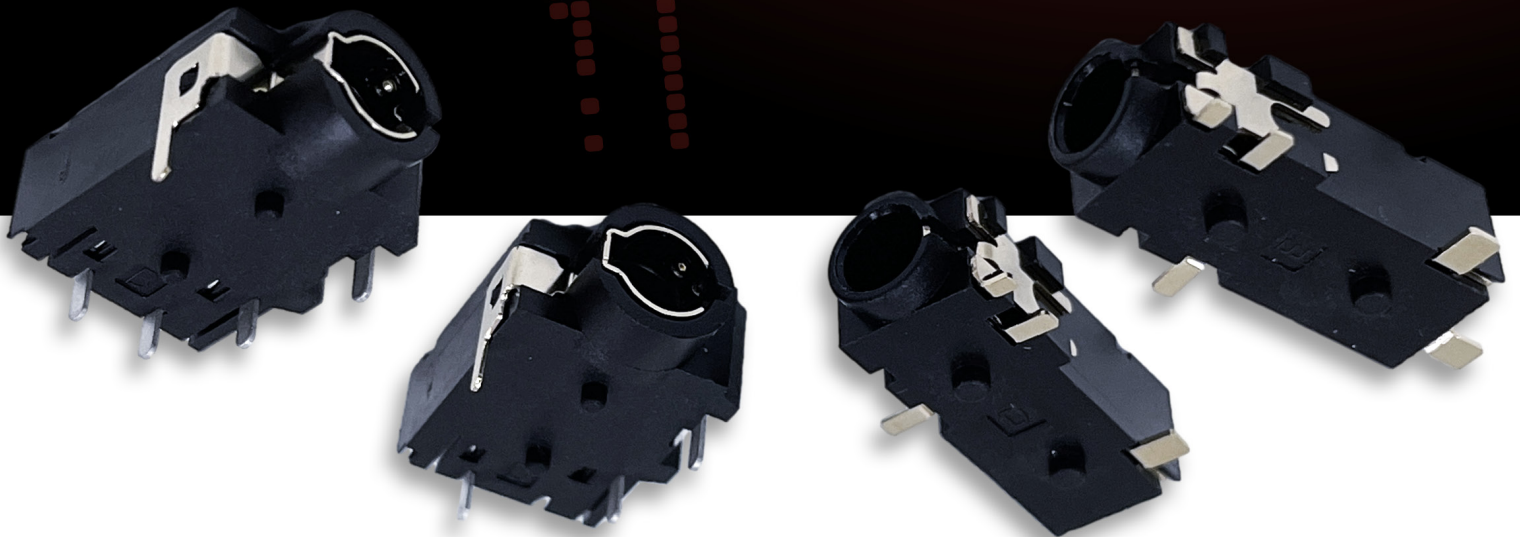




NEW PRODUCT BULLETIN 690

3.5MM [1/8"]

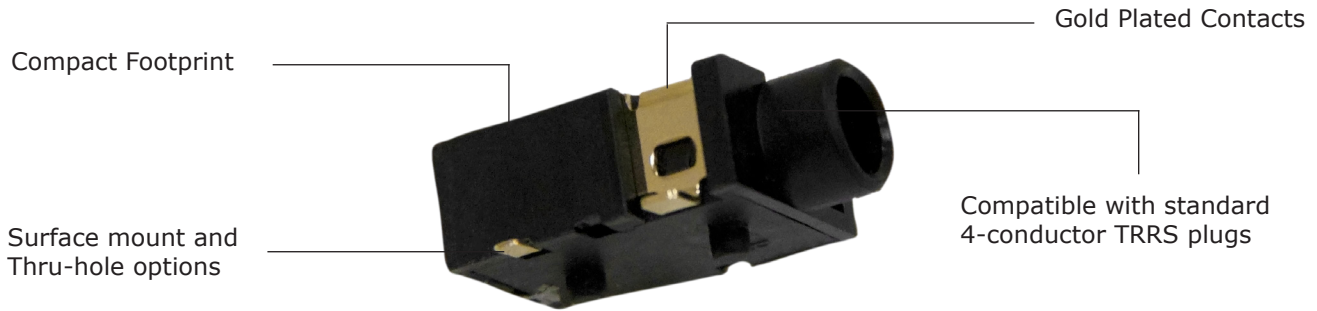
4-CONDUCTOR JACKS



Switchcraft[®]
CONXALL[®]

HARSH ENVIRONMENT CONNECTIVITY SOLUTIONS

5555 N ELSTON AVE | CHICAGO, IL | 773.792.2700 | SALES@SWITCHCRAFT.COM | WWW.SWITCHCRAFT.COM



EXPANDED OPTIONS!

3.5MM PCB MOUNT JACKS FROM SWITCHCRAFT have been the most trusted brand in the industry for over 20 years. They feature a high quality, durable design in an extremely small, cost effective package. For the first time, they are now available in a 4-conductor version for use with TRRS plugs. Both surface mount and thru-hole PC Mount options are available. Multiple variations featuring a shunt switch with a variety of schematics offer designers the flexibility they need. And of course, like all Switchcraft jacks, signal quality is critical, and these jacks are suitable for professional audio applications.



4 conductor jacks are ideal for a combined stereo-out/line-in or other signal applications requiring 4 conductors in a small space.



A shunt switch with a variety of circuits offers design engineers flexibility for any application



Switchcraft jacks have set the standard of quality for over 75 years

PART NO.	BODY STYLE	MOUNTING STYLE	CIRCUIT SCHEMATIC
35RAPC5CHWNSN	Wide	Right Angle Thru-Hole	No switch
35RAPC6CHWNSN	Wide	Right Angle Thru-Hole	Tip Switch
35RASMT5CHNTRX	Narrow	Right Angle Surface Mount	No switch
35RASMT6CHNTRX	Narrow	Right Angle Surface Mount	Tip Switch
35RASMT7CHNTRX	Narrow	Right Angle Surface Mount	Ring Switch
35RASMT8CHNTRX	Narrow	Right Angle Surface Mount	Tip/Ring Switch

Note: custom color options are available. Contact factory for more details.



35RAPC_CHWNSN



35RASMT_CHNTRX